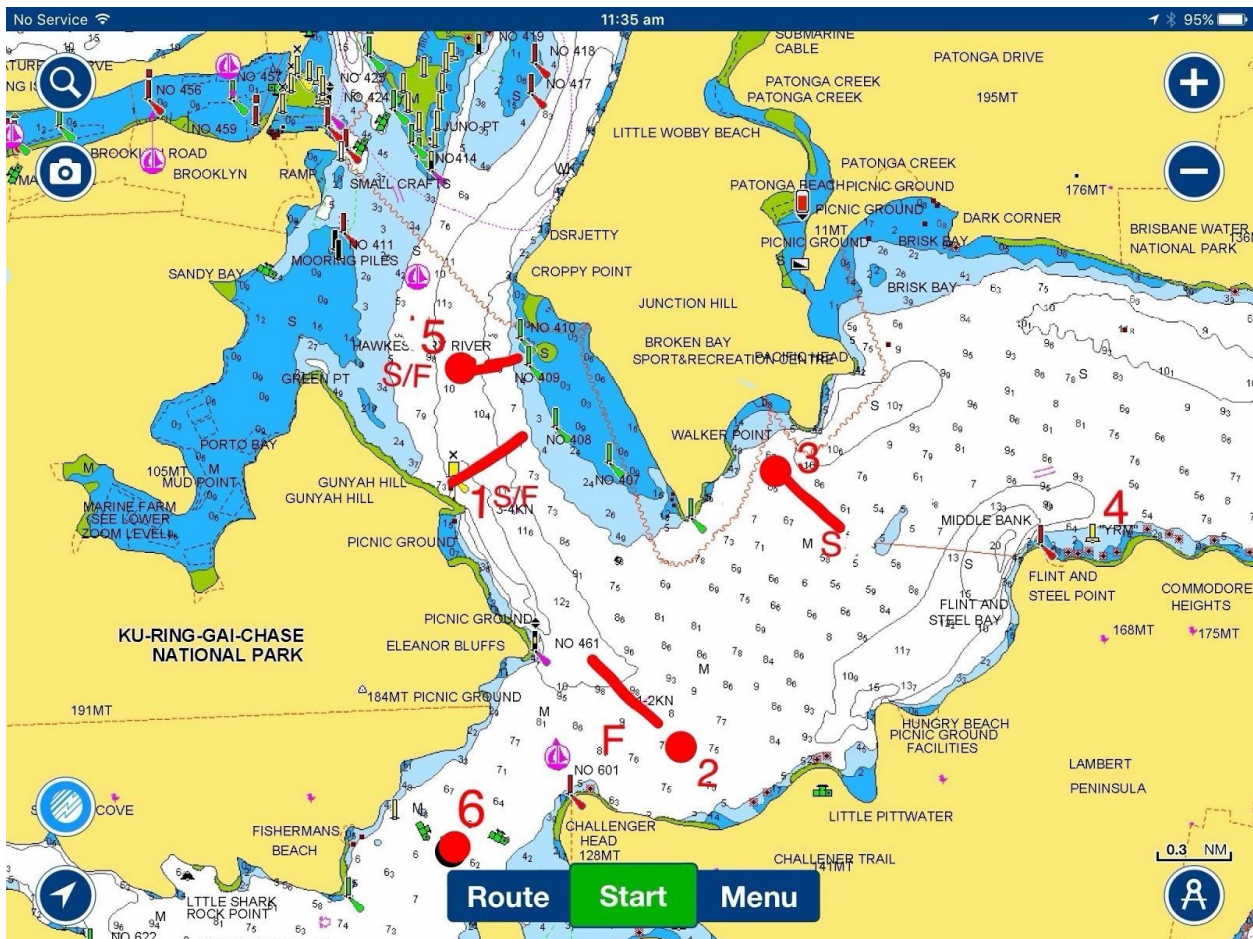


## HRYC Passage Series Courses Rev (6)



### **1. North or Northwest (Approx. 7 NM)**

Start at 1 Gonyah (leaving Gonyah to Port, heading approx. 0 to 6 deg. True),

Start at 1, 5S, 2S, 5S, 2S, Finish between CM409 & LM (5),

Note Marks 2&5 are LM (laid marks). (Start & finish lines are 100m long. The start and finish line is a transit line sighted through the mark perpendicular to the nearest shore. Leave the starting mark to port. Do not pass between the mark and shore).

### **2. Southeast (Approx. 7 NM)**

Start between CM 409 & LM 5, (Heading approx. 160 deg. True), LM 6 P, 3P, 5P, 6P, 3P,  
Finish between CM 409 & LM 5

Note Marks 5 & 6 are LM (laid marks). (Start & finish lines are 100m long).

### **3. East or Northeast ( Approx. 7 NM)**

Start Gonyah (1), (leaving Gonyah to Starboard, heading approx. 100 deg. True), The start line is a transit line sighted through the mark perpendicular to the nearest shore. Leave the starting

mark to Starboard. Do not pass between the mark and shore).

Start at 1, 4P, 3P, 4P, Finish at 1 Gunyah (leaving Gunyah close to Port) (Start & finish lines are 100m long). The finish line is a transit line sighted through the mark perpendicular to the nearest shore. Leave the mark to port. Do not pass between the mark and shore).

#### **4. Southerly or Westerly (Approx 7 NM)**

Start between CM 409 & LM 5, Then 6P, 3P, 5P, 6P, 3P, Finish between CM 409 & LM 5.

#### **5. Passage Series Southeast or Southerly**

**Start between CM 409 & LM 5**, (Heading approx. 160 deg. True),

Start at 5 as above, 6P, 3P, 6P, 3P, Finish between CM 409 & LM 5

Note Marks 5&6 are LM (laid marks). (Start & finish lines are 100m long).

#### **6. Passage Series Special NE**

**Start between CM 409 & LM 5**, (Heading approx. 140 deg. True),

Round Mackerel Beach Mark leaving it to Port.

Finish between CM 409 & LM 5

Note Mark 5 is a LM (laid mark). (Start & finish lines are 100m long)

#### **7. Passage Series Lion Is. NE, West**

Start between CM 409 & LM 5, (Heading approx. 140 deg. True),

Round Lion Is. leaving it to Starboard.

Finish between CM 409 & LM 5

Note Mark 5 is a LM (laid mark). (Start & finish lines are 100m long).

#### **8. Three Islands Race**

Start between CM 409 & LM 5, (Heading approx. 140 deg. True),

HRYC Passage Series Courses Rev (5)

Round Lion Is. Leaving it to starboard.

Round Scotland Is. leaving it to port.

Round Dangar Is. leaving it to port.

Finish between CM 409 & LM 5, (Heading approx. 140 deg. True),

Note courses may be shortened. See Specific Race notice for details